

# The Vision



**September 2005**

The Monthly Newsletter of The First Presbyterian Church of Dearborn

600 N. Brady ~ Dearborn, MI 48124

World Wide Web: [www.firstpresdearborn.org](http://www.firstpresdearborn.org)

Phone: 313-274-1313

Fax: 313-274-4852



## F a l l   S c h e d u l e

**On Sunday, September 11<sup>th</sup>  
our fall schedule begins:**

**8:45                      Contemporary Worship**

**10:10                      Education/Sunday School**

Adults - Pastor's Class

Nursery

Preschool

Kindergarten - 5th Grade

Mid High

Sr High/College Age - VOTE

**11:00                      Traditional Worship**



# Come SING!

Calling ALL singers. We would love to have you join our Chancel Choir for the fall!

**Our first rehearsal is  
Thursday, September 8.**

Rehearsals – Thursdays 7:30pm  
Sunday Call Time – 10:20am



**All you need to do is show up with a desire to sing!  
Hope to see you there!**



## **Book of the Every Other Month Club**

Do you enjoy reading? Yes? Then why not take advantage of this great opportunity to read some wonderful books and discuss them from a Christian perspective with friends? The Book of the Every Other Month Club (BEOMC) meets the morning of the second Saturday of every other month at 10 am in Room 16, upstairs. Our discussions are led by Wanda Moon. We enjoy coffee, tea, donuts, fellowship and stimulating conversation.

**Our first meeting will be September 10 at 10 am.** The book for discussion will be Wendell Berry's *Hannah Coulter*. Pick up a copy, read it and join us! Dates and books for the rest of the year will be available at the meeting.

# **WEDNESDAY - September 7 - 6PM**

## **JOIN US FOR THE ALPHA KICK-OFF DINNER**

**following dinner there are two options for adults:**

Remain in Mitchell Hall to learn more about **Alpha**  
(see article and registration form on page 23)

**OR**

Proceed to the Parlor to learn more about  
**Bible Discovery small groups.**  
(see the article below)

**Children will join Jane Lewy for  
Singing, Handbells & Drama.**

Our full fall FISH/Alpha Wednesday Night schedule  
begins on Wednesday - September 14  
(see pages 4-5 for details)



## **New School Year Resolution— Join a Bible Discovery Group**

Learning is for everyone, not just school aged children! On Wednesday, September 7 you are invited to a gathering of the leaders and members of the Bible Discovery groups. Everyone who is in a small group or who is interested in small groups is invited to attend the Alpha Kick-Off Dinner at 6:00 pm. After dinner the Bible Discovery groups will meet in the parlor for a show and tell about their group. New groups are forming with trained leaders. Come join the Bible Discovery groups as we share how these groups are helping us study the Bible, have fun and grow. Call Paul Ytterrock at the church if you have questions 313-274-1313.

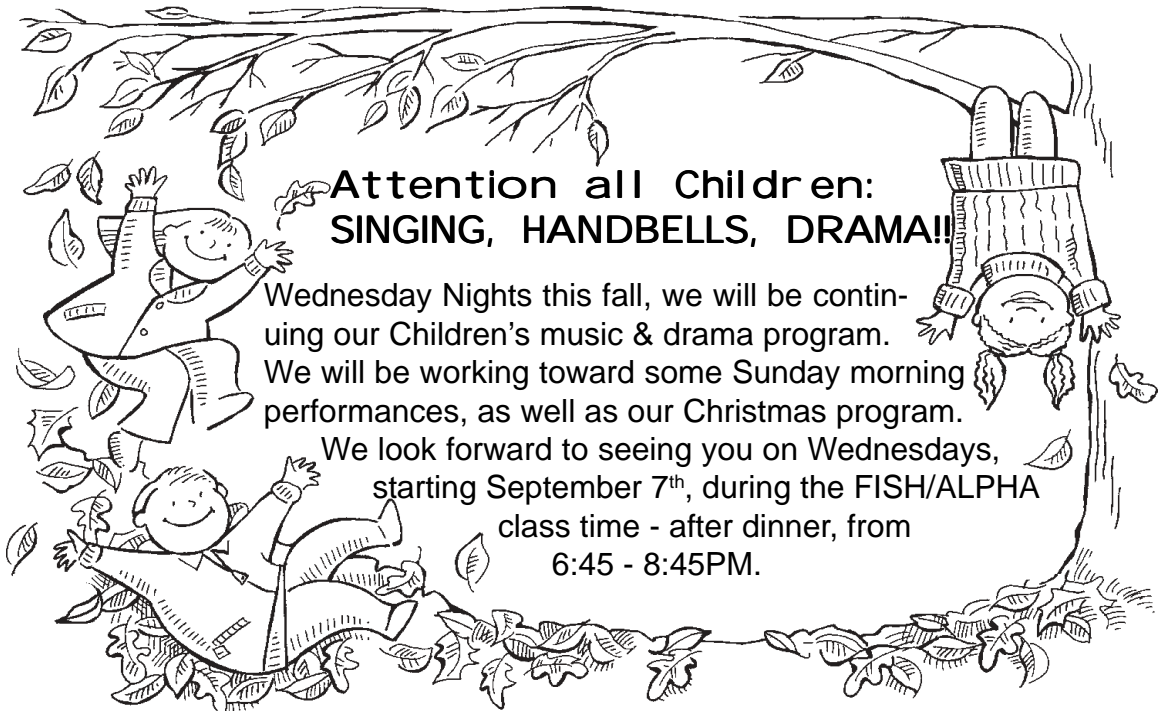


# Unlocking your Bible

Have you ever wanted to read your Bible with greater understanding, but don't know where to start? Have you ever asked any of these questions?

- What's really in the Bible?
- How do I get started?
- What tools can I use?
- Where did the bible come from?

Please come join us for a new class during the Wednesday Evening FISH Program. In "Unlocking the Bible" we will explore the Bible, its history, and tools for effective study. The new classes start on September 14<sup>th</sup> at 6:45, following dinner.



**Wednesday nights this fall ...  
dive into an adventure in discipleship.  
The evening begins with dinner at 6:00 PM  
for EVERYONE!**

Then, at **6:45 PM** those in the **FISH** program have the following options:



**Adults** - Join Marshall and Beckie Dicks for a new class *Unlocking the Bible* (see p. 6 for more information)

**Kids - preschool through grade 5** - Singing! Handbells! Drama! with Jane Lewy (see p. 6) (kids can remain in this class through 8:45 when Alpha concludes)

**Confirmation Class** (for 8th/9th graders) with Paul Ytterrock

**Mid and Sr High** - Study Hall

**FISH classes end at 8:00 PM**

**Those in Alpha take another track.** Following dinner, our Alpha guests have a time of music and comedy, watch a DVD talk on a topic concerning the Christian faith, and then break out into small groups for discussion.

**Alpha ends at 8:45 PM**



**NOTE:** This schedule begins on September 14. For our September 7 Kick-Off, things are a little different! See page 3 for details.

*From the Desk of Chris Mayer, Our Parish Nurse*

## **Backpack Safety**

*(Information from The American Academy of Pediatrics Website)*

Backpacks are a popular and practical way for children and teenagers to carry schoolbooks and supplies. When used correctly, backpacks can be a good way to carry the necessities of the school day. They are designed to distribute the weight of the load among some of the body's strongest muscles.

However backpacks that are too heavy or are worn incorrectly can cause problems for children and teenagers. Improperly used backpacks may injure muscles and joints. This can lead to severe back, neck, and shoulder pain, as well as posture problems. Share these guidelines to help your family use backpacks safely.

### **Choose the right backpack. Look for the following:**

- **Wide, padded shoulder straps** – Narrow straps can dig into shoulders. This can cause pain and restrict circulation.
- **Two shoulder straps** – Backpacks with one shoulder strap that runs across the body cannot distribute weight evenly.
- **Padded back** – A padded back protects against sharp edges on objects inside the pack and increases comfort.
- **Waist strap** – A waist strap can distribute the weight of a heavy load more evenly.
- **Lightweight backpack** – The backpack itself should not add much weight to the load.
- **Rolling backpack** – This type of backpack may be a good choice for students who must tote a heavy load. Remember that rolling backpacks still must be carried up stairs. They may be difficult to roll in snow.

### **To prevent injury when using a backpack, do the following:**

- **Always use both shoulder straps.** Slinging a backpack over one shoulder can strain muscles. Wearing a backpack on one shoulder may increase curvature of the spine.

*(continued on next page)*

## **Backpack Safety, continued**

- **Tighten the straps** so that the pack is close to the body. The straps should hold the pack two inches above the waist.
- **Pack light.** The backpack should never weigh more than 10 to 20 percent of the student's total body weight.
- **Organize the backpack** to use all of its compartments. Pack heavier items closest to the center of the back.
- **Stop often at school lockers**, if possible. Do not carry all of the books needed for the day.
- **Bend using both knees**, when you bend down. Do not bend over at the waist when wearing or lifting a heavy backpack.
- **Learn back-strengthening exercises** to build up the muscles used to carry a backpack. Ask your pediatrician for advice.

### **Parents also can help in the following ways:**

- Encourage your child or teenager to tell you about pain or discomfort that may be caused by a heavy backpack. Do not ignore any back pain in a child or teenager. Ask your pediatrician for advice.
- Talk to the school about lightening the load. Be sure the school allows students to stop at their lockers throughout the day. Team up with other parents to encourage changes.
- Consider buying a second set of textbooks for your student to keep at home.

The information contained in this publication should not be used as a substitute for the medical care and advice of your pediatrician. There may be variations in treatment that your pediatrician may recommend based on individual facts and circumstances.



**The Card Ministry will meet September 12, the second Monday, due to Labor Day.**

# Session News

From the **July 2005** meeting of Session:

- Joel DeHamer reported that we have a \$23,000 deficit through June and the worst-case projection is a year-end deficit of \$70,000.
- Session members discussed feedback regarding the summer worship format. A survey will be distributed to the congregation this fall to assist staff and session in evaluating the summer schedule and determining whether it will be repeated next summer.
- The regular worship schedule will resume in the fall, with one minor change. The Contemporary service will begin at 8:45 a.m. to provide for more time for education between the services. The Education Hour will be from 10:10 to 10:50 and the Traditional service will continue to commence at 11:00 a.m.
- At its June meeting, the Detroit Presbytery voted to request that the General Assembly change the Book of Order and remove the provision that pastors, elders, and deacons remain celibate in singleness or faithful in marriage.

From the **August 2005** meeting of Session:

- Representatives of the congregation requested that Session take certain actions with respect to the media booth and the presence of electronic and musical equipment in the chancel during the Traditional Service. Please see the separate article in this edition of the Vision for more information on the motions that Session approved.
- Session approved a proposal made by the Men's Fellowship to erect a cypress cross monument, modeled after our sanctuary cross, behind the juniper bushes located between the sanctuary and Mitchell Hall. The area is where cremains are buried and will be called "Memorial Glen".

## Session Acts in Response to Group Petition on New Media Booth

At its August 17 meeting, Session met with representatives of a group of members of the congregation who are dissatisfied with the placement and configuration of the new media booth in our sanctuary. The representatives orally presented a written statement requesting that Session take certain actions with respect to the media booth and with respect to the presence of electronic and musical equipment in the chancel during the Traditional Service. The following are the requests made by the group and Session's responses:

Request: "[W]e would like an assurance that when the Traditional Services resume in September, ALL, and we want to emphasize ALL, of the electronic and musical equipment will be stored behind the partition that is placed between the two central pillars in the Chancel." (emphasis theirs)

Session responded by passing the following motion: "The Worship and Arts committee is directed to develop a proposed plan and list of musical equipment and technology that should be stored or hidden during the traditional service, what can be left visible, as well as identify where the equipment can be stored, keeping in mind who will do it and how it will be accomplished. The planning process should include a member of the group requesting the plan as well as a member from the band."

Request: "We request that the Session contact Mr. Jack Lee, Principal Architect [of Dow, Howell, and Gilmore, the firm founded by Alden Dow, the architect of our building], and request that he meet with a few Session and two of our Committee members to review the placement, size and other aspects of the Media Center as it now is placed in the sanctuary."

Session responded by passing the following motion: "We request that the Worship and Arts committee draft a letter to the Dow architectural firm [Dow, Howell, and Gilmore of Midland, Michigan]. The letter will request that the firm provide a quotation for consultation services for modifications to the church building, primarily for modifications to the sanctuary to meet the changing needs and requirements of the congregation including those for multi-media and digital technology."

Session also directed that since we must have a functioning technology center for worship to continue, construction of the media booth should be completed in its current location and configuration, at least as an interim measure.

# Divorce Care

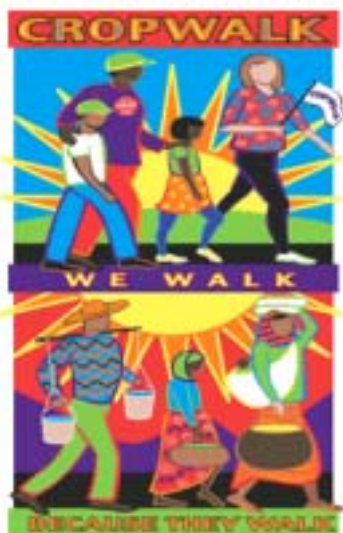
## Divorce Recovery Group

8-week session begins here on  
September 13th, 7:00 PM

There are two parts to each weekly DivorceCare session. During the first 30-40 minutes of the meeting, the group watches a video. DivorceCare videos are produced in an interesting-to-watch television magazine format, featuring top experts on divorce and recovery subjects from a Christian perspective. They include on-location video and real-life stories of people experiencing divorce. Just a few of the topics covered are: *What's Happening to Me?*, *The Road to Healing*, *Facing My Anger*, *Facing My Depression*, *Single Sexuality*, *Kid Care*, *Financial Survival*, and *New Relationships*.

Following the video, the participants spend time as a group, discussing what was presented on that week's video and what is going on in their lives.

The group here at First Church will meet on Tuesday evenings at 7 pm, beginning September 13th and ending November 1st. There is a \$12 fee to cover the cost of materials. Anyone is welcome, so if you know someone who might benefit from this program, please tell them about it. If you would like to register or if you would like more information, please contact Denise Graham in the church office at (313)274-1313. You can also find additional information at [www.divorcecare.org](http://www.divorcecare.org).



## Crop Walk 2005

The 2005 Dearborn - Dearborn Heights CROP Walk will be on Sunday, October 2 at 2:00pm. If anyone is interested in walking and raising funds for everything from local soup kitchens to emergency assistance around the world, please contact Joel DeHamer at 313-565-0562 or email [jdehamer@wowway.com](mailto:jdehamer@wowway.com).

# Mid High Day Camp 2005



During the first week of August, many of our Mid High youth and friends participated in a week-long day camp filled with devotion, laughter, prayer and friends. I would like to thank Chris Mayer, Emily Nietering and Paul Ytterrock for helping to chaperone and drive, and Mike Hoffman for everything he does with this great group of kids.

~Kate Bruder



Photos by Kate Bruder

# September



## TREASURE CHEST RUMMAGE



**October 5 & 6**

### Church Library — Memorial Books

In the early 1970's, Presbyterian Women adopted the Memorial Book project as a means to remember and honor the dearly departed women members of our church. Since the inception of this project, we have placed approximately 400 hard-cover books on the shelves of the church library. Each book is thoughtfully chosen and bears a nameplate in the inside cover with the honoree's name and date of passing. The books are authored by noted Christian writers and are for the enrichment of all our members. If you are looking for a good inspirational, well-written book to read, visit the library and look for the bookshelf marked Presbyterian Women Memorial Books.

- |                      |                     |
|----------------------|---------------------|
| 1 Jane Currie        | 16 Gary White       |
| 2 Claudia Maxfield   | 18 Thelma Middlemis |
| 3 Nathan Barranger   | 20 Joyce Dickieson  |
| 5 Jose Brailsford    | 20 Sharon Laura     |
| 5 Michael Barber     | 21 Phoebe Hough     |
| 6 Jewell Dean        | 21 Jean Johnston    |
| 6 Linda Hall         | 21 David Smith      |
| 6 Jon Joachim        | 22 Mary Lambie      |
| 7 Ruth File          | 22 Mark Brushaber   |
| 7 Lynn Hoffman       | 22 Kolleen Ingram   |
| 8 Nancy Badore       | 23 Cindy McCaskey   |
| 9 Helen Maloney      | 24 Betty Brown      |
| 9 Johanna Bolash     | 25 Marie Shearer    |
| 9 Mike Hoffman       | 27 Bev Fisher       |
| 10 Bud Cashwell      | 29 Dick Smith       |
| 11 Marguerite Cooper | 29 Doris Matthews   |
| 12 Marilyn Rank      | 29 Robert Miller    |
| 13 Lutz Reiter       | 30 Eugene P. Smith  |
| 13 Karen Fink        | 30 Kenny Kilgore    |
| 13 Ashlyn Doner      |                     |
| 13 Elissa Hoffman    |                     |
| 14 Maggie Badore     |                     |
| 16 Irene VanVliet    |                     |

\*If we missed a birthday in error, please put a note in the Vision box in the office.

# ▶▶▶ Odds & Ends ▶▶▶

*With Sympathy  
to the families of:*

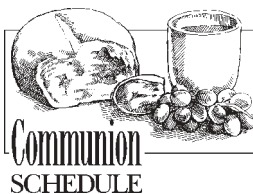
- Andy Anderson
- Esther Miller
- Graham Porter

Long-time member, Graham Porter died on Monday, August 8, 2005. Cards/letters can be sent to his surviving spouse Jennie Porter at 1432 Southampton Ct., Franklin, TN 37064.

*Congratulations!*

Doris and Carl Bryer have a new granddaughter born on August 15. Her name is Violet Grace Cronkite.

Ivan and Kim Doverspike have a new daughter born on July 26. Her name is Chloe Veda.



Please note that Communion for the month of September will be on the **second** Sunday of the month, **September 11<sup>th</sup>**.

## September Prayer Focus

*This month, please keep the following in your prayers:*

- Small farmers being aided through the Presbyterian Coffee Project
- Alpha and FISH
- DivorceCare Divorce Recovery Group
- Our new Confirmation Class

## A Note from Old Friends

Pastor Doug Barranger received a card from Jean Howie (Mrs. Carl), reporting that she and Rev. Carl Howie are now living in a Presbyterian retirement community in St. Petersburg, FL. She was thankful for copies of *The Vision* they have received, and was very happy to note that we have added a Parish Nurse to our staff.

*Thank You!*

I would like to express my gratitude to everyone who phoned and sent cards during my sisters illness and recent passing. Most of all I appreciate all the prayers that were said for Jeanie and myself. God bless you and God be with you always. ~Marion Holowaty

**The deadline for the October edition of *The Vision* is September 15, 2005.** Place any submissions in the VISION box in the church office or email them to Angela Saylor at [AJN37@aol.com](mailto:AJN37@aol.com).

# SonSounds '05

SonSounds '05 was very successful and reached a crowd beyond our own congregation. We estimate that we had between 250-300 people participate in this 5 hour Christian music event. This event brought in close to \$2000 to be sent directly to Scripture Union Missions in Peru. A huge thank-you goes to the following SonSounds '05 chairpersons for all their help and support putting this festival together:

Mike Barr, Bob Brinton, and Ann Phillips: Food

Ann Phillips: Prize solicitations

Mike Jones: Barricades

Marshall Dicks: Obtained organist

Bob Szczechura: Inflatable bouncers

Amy Bruhn: Finances and wrist bands

Kate Bruder: Relief centers, lawn signs, and Peru display

Brian Mayer: Generators and Sound tech

Sara Szczechura: Tee shirt and bracelet sales

Donna Barranger: Art activities and publicity

Keith Ingram: Security

Angie Saylor: Publicity, flyers, and tri-folds

Jim Shearer: Flyer design

Randy Bruder: Tee shirt design and order

Paul Ytterock: Funds to Peru

The New Harvest Praise Band: Sound equipment and praise music

FPC Family: Pre-event preparations, participation and support of the event, and clean-up (you all are truly amazing people with real, Christ-like, servant hearts!)

I am looking forward to SonSounds '06. Let me know if you have any suggestions or wish to participate in order to make this event even more successful next year. Thanks Church!

-Mike Hoffman, Event Coordinator  
SonSounds '05



Our New Harvest Band graced the outdoor stage.

# son sound 2005 MUSIC FEST

~ Photos by Ted Daykin



Amy Bruhn, Kolleen Ingram and Anne Witkowski sold "bouncer" wristbands.



Donna Barranger put together some cool projects for the children's arts and crafts area.



The festival kicked-off with a hymn sing in the sanctuary.



Brian Mayer and Chris Martin handled the "technology stuff".

## Focus **on** Folks: Rebecca Scott

---

**Length Of Time at FPC:** I met Jan and Ed Beers in 1998 when I was working at McLaughlin's Furniture. They invited us to visit the church, and we have been here ever since.

**Background Info:** I have lived in Dearborn or Dearborn Heights my entire life. I grew up in the Baptist church and graduated from Inter-City Christian high school. I met my husband Jim when we were both working at Hudson's. We have been married 10 years. We have one daughter, Emma Clare (age 6), and one very high maintenance poodle, named Mickey. I'm currently working for Hallmark as a merchandiser.

**How/When I became a Christian:** I accepted Christ as a child during Vacation Bible School. It was easy to follow Christ as a child/teen, growing up in a Christian home and attending a Christian school. My beliefs weren't really tested until college. It wasn't until then that I really began to grow as a Christian.

**Activities/Ministries at FPC:** I'm currently involved in the card ministry, helping in Vacation Bible School and this fall I will begin my term as deacon.

**Favorite Leisure activities:** I enjoy reading, gardening, going to every Detroit area dollar store (OK! as well as Canada), and doing projects with Emma. Jim has recently begun making furniture, and Emma and I have finished them off with decorative paint techniques. I love to refinish old furniture and antiques.

**Favorite Book:** I'm reading a book or magazine all of the time; I can't say that I have a favorite. I do have a favorite library and librarian, Miss Nancy at the Dearborn Snow library. There's nothing like being able to read a book or movie review at home, and then go to the computer and reserve it at the library. They call you when it arrives, and all you have to do is pick it up. Wonderful!!

**Favorite Movie:** Anything light and funny. I especially like *Green Card*, *What About Bob*, *Christmas Story*, and *Oh Brother- Where Art Thou?*

**My Favorite Foods:** Anything made with dark chocolate, or any meal I don't have to cook!

*(continued on next page)*

## Focus on Folks: Rebecca Scott, *continued*

**Favorite Music:** I enjoy many types of music, but specifically old jazz/blues, movie or Broadway sound tracks, and world music, especially Celtic.

**Favorite TV program:** I don't really watch very much TV, but I never tire of *I Love Lucy* reruns.

**My Favorite Place:** In our sunroom, in the comfy chair, holding Emma and Mickey in my lap.

**What makes me Laugh:** The daily antics of Emma and Mickey!

**My Favorite Bible Passage:** Daniel 6:27a: "He delivereth and rescueth, and He worketh signs and wonders in heaven and earth".

**The person I would like most to meet and why:** My great grandmother, the one I was named after. From the stories I have heard about her, she seems like she would be very interesting to meet.

**The thing that might surprise people about me:** I recently sold my vintage Barbie collection of 300+ dolls and accessories on Ebay.

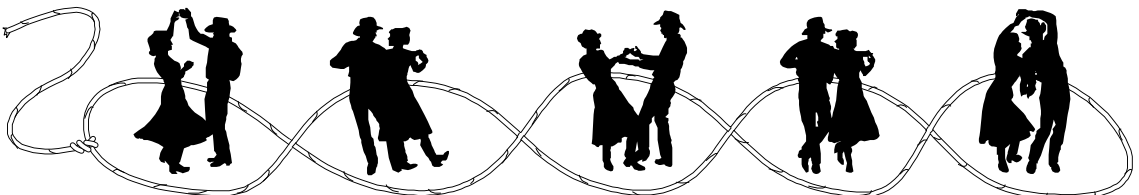
---

## Presbyterian Women's Fall Gathering Harvest Hoedown

Saturday October 1<sup>st</sup> 6:30PM

Featuring a Down-Home Catered Dinner and Square Dancing!  
AND our Fabulous Dessert Buffet!

Adults: \$12.50, Children 6-11 yrs.: \$6.00, 0-5 yrs.: Free





Jane Lewy led the tribes in singing and dancing.

# Images from our Holy Land Adventure

Photos by Ted Daykin

## Church Family Week August 8-12, 2005



Rebecca Scott and Jan Cobb taught the tribes a variety of arts and crafts.



Bob and Lynette Carlson handled games and recreation.



Sue Young taught lessons in the Synagogue School.



Paul Ytterrock taught an adult class on "The Jesus I Never Knew".

## **Answers to Your Publication Questions**

### ***Which publication should I submit my information to?***

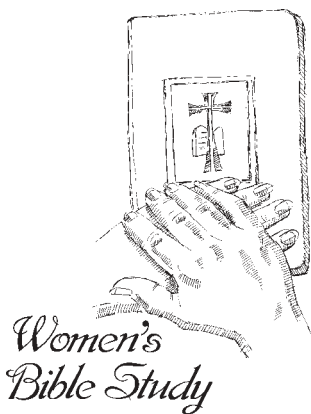
Because of our simplified weekly format, when you submit information for the weekly bulletin announcements, you should keep it very short – provide only the most essential information. You can provide longer versions of announcements, or even articles about your event or activity for inclusion in the monthly church newsletter, *The Vision*.

### ***What are the deadlines for each publication?***

Announcements for the weekly bulletin must be submitted by **noon of the Monday** prior to the Sunday on which you want the information to appear. Note that this is a change from the prior deadline. Submissions for *The Vision* are due the **fifteenth of the month** prior to publication – in other words, if you want something in the October issue, it needs to be submitted by September 15<sup>th</sup>.

### ***How do I submit information to be published?***

Announcements for the weekly bulletin should be placed in the clear container on the wall next to the secretary's desk in the main office marked "Weekly Bulletin", or emailed to Vicki Davidson, the pastor's administrative assistant, at [vickid@FirstPresDearborn.org](mailto:vickid@FirstPresDearborn.org). Submissions for *The Vision* should be placed in the corresponding wall container labeled "The Vision", or emailed to Angie Saylor at [ajn37@aol.com](mailto:ajn37@aol.com). It is much appreciated when submissions for either publication are submitted by email or in a digital format (i.e., on a computer disk or CD).



## **Presbyterian Women's Bible Study**

PW Bible study resumes its Fall schedule beginning Thursday, Sept. 8, 2005 at 10:00 a.m. in the North Parlor. Our study "Quotable Women of the Bible — What She Said" continues with the story of Mary and Martha. The Bible studies are authored by women in the ministry and are field-tested across the country 2 years prior to publication. This year's study is written by Dr. Dale Lindsay Morgan, Sr. Pastor of St. Andrew's Presbyterian Church, Santa Barbara, CA since 1987. She has also written Presbyterian curricula and is a noted speaker at Presbyterian Women gatherings. The study is written by women for women and the class enjoys insightful, lively discussion. All women are invited.



## *Why Join the Presbyterian Coffee Project?*

by Jonathan Ytterock

In 2001, Orin Smith, the CEO of Starbucks Coffee Company, made a salary of \$2,145,000. The persons or families who harvested the coffee he would sell made about \$300. While Orin sat, the farmers sweated. While Orin sipped, the farmers starved. While Orin dreamed, the farmers died. But Orin Smith is not the only one to blame. Society in general is at fault. We so easily get wrapped up in everything we have that we forget those who do not have. We are so easily deceived by false leaders and advertising we lose sight of truth, of reality. Time for a REALITY CHECK!

Every day thousands of coffee farmers in South America, the Caribbean, Africa, and Asia face the harsh reality of out-working what they make. While the world enjoys the coffee that they harvest, they wonder whether they will have the strength to work the next day. If they don't work they don't get paid their measly wages, and if they don't get paid their measly wages they can't buy the small amount of food that their family survives on. Every day coffee farmers are faced with this dilemma.

Recently, some of the youth discovered this shocking information while participating in the 30-Hour Famine. Many did not know where their coffee came from, and all were disgusted by the knowledge of these facts. Something had to be done. To address the congregation, those who participated in the 30-Hour Famine created a short informational news bulletin but we still felt that something more had to be done. During one of the discussion sessions at the 30-Hour Famine, the group learned of a company called Equal Exchange.

In 1986, in hopes to create an alternative approach to trade, an approach that included informed consumers, honest and fair trade relationships, and cooperative principles, Equal Exchange was founded. Equal Exchange commits to offering consumers fine, organic, gourmet coffees. They "always pay a fair price to the farmer, including a guaranteed minimum when market prices are low"; "work directly with democratically run farming cooperatives . . . so that the benefits of trade actually reach the farmers and their communities"; "provide vital advance credit to farmers, which is normally unavailable or offered at prohibitive rates"; "encourage ecologically sustainable farming practices"; and finally "develop long-term trade relations based on trust and respect."

So now you may be thinking, "OK that's great, but what does that have to do with us?" Well, everything actually. You see, when the youth group wanted to do something more, we started to think, "Well, we're Presbyterians . . . and boy do we like our coffee." Why not be involved in the Presbyterian Coffee Project! It would put everything we learned and wanted to do to help into practice.

The Presbyterian Coffee Project helps to link "congregations with small farmers and their families through fair trade." Churches like ours can order coffee, tea, and cocoa through Equal Exchange and by doing so not only help families and communities who are in need, but be united with hundreds of churches across the country that are doing the same thing. Our church is very committed to outreach and mission work, so when the Presbyterian Coffee Project was proposed to our Outreach and Mission Committee, it was immediately and joyfully passed. So drink up, and while doing

so, think about the lives that are being changed for just a few dollars more.

We are God's people and He has called us to be leaders. We have the power to change the world around us if only we would pay attention to it. If we would listen to our earth and her people we would hear the cries for help. We can make a difference. As musician and lyricist Ben Harper wrote,

*When the people lead  
the leaders they will have to follow  
and all their lies and their alibis  
they will have to swallow  
and it's you that has the authority  
for the one who is right  
is the majority  
When people lead  
People take the lead  
children you've got to take your lead  
or you shall be led astray.*

So let us take the lead. Let us oppose the face of tyranny and oppression, and stand for the only truth, Jesus Christ. Next time you're in Starbucks, make them brew you Fair Trade coffee. Order through the Presbyterian Coffee Project for your households as well. Make the world hear our cry for equality and unity.

"Then the righteous will answer him, 'Lord, when did we see you hungry and feed you, or thirsty and give you something to drink? When did we see you a stranger and invite you in, or needing clothes and clothe you? When did we see you sick or in prison and go to visit you?'

"The King will reply, 'I tell you the truth, whatever you did for one of the least of these brothers of mine, you did for me.'" Matthew 25:37-40

### **ORDER YOUR COFFEE FROM THE PRESBYTERIAN COFFEE PROJECT**

All of the coffee you now drink at the church has been purchased through the **Presbyterian Coffee Project**, and **you can purchase coffee for home use through the Project as well**. All of the coffee is Fair Trade Certified and most of it is organic. For every pound of coffee purchased, a contribution is also made to the Presbyterian Small Farmers Fund. You can purchase Presbyterian Coffee Project coffee, tea and cocoa by filling out an order form (found on the information table outside the sanctuary) and placing it, with your payment, in Angie Saylor's mail box in the main church office. Orders will be placed the first of each month. You will be notified when your coffee, tea or cocoa arrives and it can be picked up at the church.

*To get more information, visit: [www.pcusa.org/coffee](http://www.pcusa.org/coffee)*



## Helping Out at Grandale

Our church family provided lunches for the Grandale Presbyterian Church of the Master Summer Youth Program during the week of July 25. A special thanks goes to all those who helped to make it a success. Our diligent grocery shoppers were Charlene Reid and Nancy DeHamer. Many congregation members spent time cooking, preparing, and serving lunches. Those who volunteered their time were Nancy DeHamer,

Charlene Reid, Olympia and Vic Todor, Kolleen Ingram, Bob and Diane Missler, Margie Johnston-Maurer, Jamie Maurer, Eddie G, Nellie LePard, Fran Buckley, Caroline Bristol, Linda Guinn, Margaret Richards, and Jenny Miazga. Ted Daykin visited the youth program and took pictures one day. The Grandale youth loved the baked goods made by Nancy Barber, Nan Missel, Doris Matthews, Doris Bryer, Tracie Szczechura, Nancy Slanec, Lynette Carlson, Luz Ytterrock, Charlene Reid, and Angie Saylor. The Presbyterian Women were very generous in purchasing and preparing bag lunches for Monday. Those who helped included Charlene Reid, Nancy DeHamer, Olympia Todor, Lynn Blosser, Debbie Martin, Margie Johnston-Maurer, and Bob and Diane Missler. Bob and Diane Missler delivered the bag lunches on Monday morning. The week was a fun and enjoyable mission experience. Thanks again to all our volunteers who worked hard with smiles to make it a great success.

In addition to providing lunches for a week, The Outreach and Mission Committee gave \$1,000 to provide funds for the Grandale Summer Youth Program.

The spirit of the Lord is hard at work at Grandale. Please keep them in your prayers as they continue to share God's love in the community.

- Photos by Ted Daykin



Elders are available to pray for those who need healing prayer. If you would like the elders to arrange a convenient time and place to pray for you, just contact the **Prayer Contact Elder for the month of September: Angie Saylor.** You may contact her at (313) 388-6966 or [ajn37@aol.com](mailto:ajn37@aol.com).



**CAN YOU HELP?** Looking for fun, fellowship, food, and service? Why not volunteer your group, or get a group together to prepare a dinner for Alpha/Fish on Wednesday nights? Sign up early for your choice of dates between September 14 & November 16 or December 7-21. There are many options. You can prepare the meal, order the food already prepared, or ready to heat and serve. We even have an Alpha Cookbook with recipes for large numbers. Sign up on the Christian Education bulletin board. Call or email Sharon Francis with questions or to sign up. 313-562-6936 or srfrancis@comcast.net.



## ALPHA FALL KICKOFF

We begin our sixth Alpha class with our **Kick-Off Dinner** on **Wednesday, September 7th from 6-8 pm** – an opportunity for you, your friends, and your family to have a great dinner and learn about Alpha. That night we will feature a special DVD presentation: ***Christianity: Boring, Untrue and Irrelevant?*** There is no obligation to join the course, just come and find out whether Alpha is for you. If you do decide to join the course, sessions continue on the following Wednesday evenings from 6-8:45 pm and include dinner, a DVD presentation, and small group discussion. There is no charge for Alpha.

**Need more information?** Contact Angie Saylor, Alpha Director, at (313)388-6966 or ajn37@aol.com

---

### Alpha Kick-Off Dinner Reservation/Course Registration

Name(s): \_\_\_\_\_

Full Mailing Address: \_\_\_\_\_

Phone Number and/or E-mail address: \_\_\_\_\_

☐ I/We plan to attend the Kick-Off Dinner. The number attending will be \_\_\_\_.

☐ I/We would like to register for the Alpha course right now.

If registering for the course, it would be very helpful if you could give us an indication of your age: \_\_\_\_\_

PLEASE LEAVE THIS FORM IN THE CHURCH OFFICE, MAIL IT IN, OR PLACE IT IN THE OFFERING PLATE ON SUNDAY. We look forward to seeing you.

Newsletter of The First Presbyterian Church  
of Dearborn  
600 North Brady Road  
Dearborn, MI 48124

Non-Profit  
U.S. Postage Paid  
Dearborn, MI  
Permit 516

# The Vision

Senior Pastor  
Rev. Douglas Barranger, Ph.D.

Director of Christian Ed.:  
Paul Ytterock

Director of Music:  
Marshall Dicks

Parish Nurse:  
Chris Mayer, RN